

BC Mental Health and Substance Use Services

Research Priorities 2020-2023



**BC MENTAL HEALTH
& SUBSTANCE USE SERVICES**
Provincial Health Services Authority

OVERVIEW

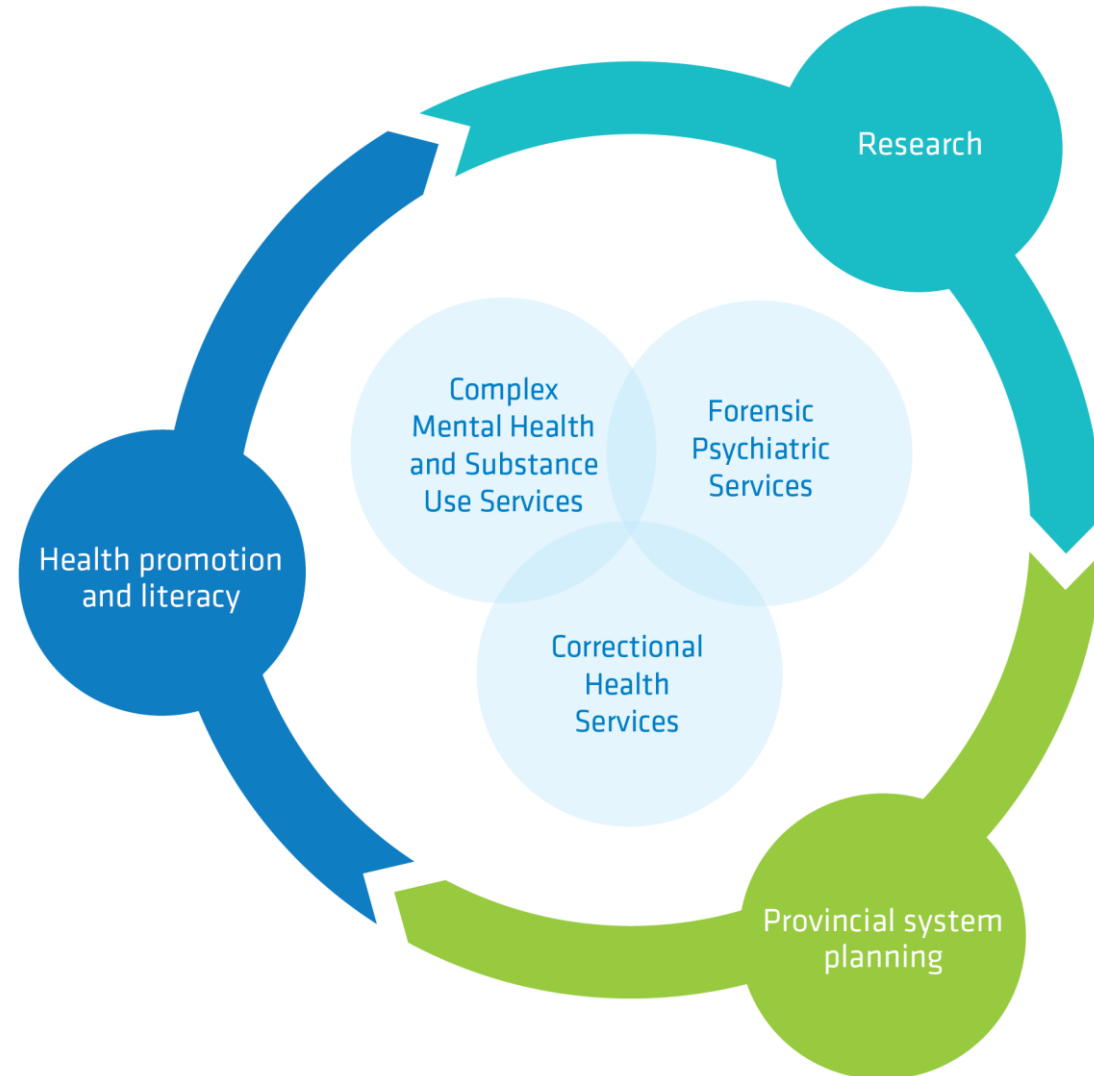
After its formation in 2001, the Provincial Health Services Authority (PHSA) assumed responsibility for BC's specialized health services, including what ultimately became BC Mental Health and Substance Use Services (BCMHSUS).

Today, BCMHSUS provides specialized adult mental health and substance use services for British Columbians with complex needs.



Overview

- **Services are delivered under three clinical program areas:**
 - Adult Complex Mental Health Substance Use Services
 - Forensic Psychiatric Services
 - Correctional Health Services
- **We also engage in:**
 - Mental health promotion and illness prevention
 - Health literacy advancement work in partnership to strengthen the provincial mental health and substance use system of care



Priorities (2020-2023)

We will prioritize **five key actions** that build on recent review findings and consultations with key stakeholders in alignment with the BCMHSUS mandate and directional priorities. They are intended to help us achieve our vision.

1 Strengthen capacity for research that is relevant, meaningful, and contributes to better mental health and wellness for British Columbians.

2 Enhance connections to optimize communication, collaboration, and impact of mental health and substance use research across BC.

3 Embrace and integrate best practices for knowledge translation and exchange to generate, share, and apply new knowledge.

4 Encourage and facilitate the involvement of clinicians, health system leaders, and people with lived and living experience in the research process.

5 Strengthen infrastructure to better support research at BCMHSUS.

Achievements

Three new Research Lead positions were created to strengthen research that aligns with our clinical mandate, and to enhance connections between evidence and practice across BCMHSUS.

Two new BCMHSUS Research membership categories, Community Partners and Affiliate Investigators, expand our community to increase awareness, create connection, and facilitate opportunities for research collaboration, synergy, and innovation.

The first-ever Research Challenge engages direct care providers to articulate and address a practice-based research question, in partnership with people with lived experience and with guidance from a research mentor.



About the BCMHSUS Research Institute

The BCMHSUS Research Institute was created in 2012 with legacy funds from Riverview Hospital, and continues to support programs focused primarily on adults with complex mental health and substance use issues.

The Institute features:

- Principal investigators (PIs) and clinical researchers from a range of disciplines
- Trainees, research support staff and volunteers
- Members and affiliates working from the Oak St campus, Red Fish Healing Centre, Forensic Psychiatric Hospital, and other sites
- Researchers with multiple university and research institute affiliations



OUR MANDATE

- To be the research arm of BCMHSUS
- To be the face of mental health and substance use research for PHSA
- To support research across the lifespan that aims to improve the health, wellbeing, and health care of British Columbians at risk for, or experiencing, mental health and/or substance use issues, and those involved in the forensic psychiatric or provincial correctional systems, and their families. This includes people with the most complex and severe mental health and substance use challenges

Our vision:

The BCMHSUS Research Institute seeks to achieve national name recognition for excellence in mental health and substance use research across the lifespan, with a core focus on adult populations with complex needs.

OUR MISSION

- **To generate** new knowledge and evidence-based solutions that inform and transform the health, wellbeing, and health care of British Columbians at risk for, or experiencing, mental health and/or substance use issues and those involved in the correctional system and their families.
- **To encourage** excellence and innovative thinking and approaches in mental health and substance use research.
- **To partner** with researchers and academic institutions, clinicians, clients and families, and other stakeholders within and outside BC to inspire, inform, and amplify research that is relevant, meaningful, and positively impact patients, programs and the health system.

Key Principles:

We are committed to equity, diversity, and inclusion; transparency and accountability; and responsible financial stewardship.